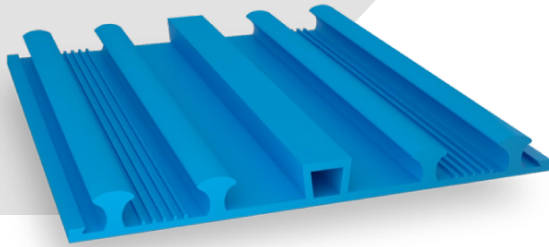


Vetostop PVC Range

A range of concrete embedded PVC waterstop profiles



Uses

- Underground chambers, STPS and WTPS.
- Retaining walls, dams, canals, and ponds.
- Basements, tunnels, subways, and culverts.
- Reservoirs, tanks, and swimming pools.
- Strip and raft foundations.

Product Description

Vetostop PVC Waterstops is a range of concrete embedded PVC profiles that stop water passage through the tortuous path and positive valve seal mechanisms. The profiles are precisely engineered to block water passage in concrete joints. Vetostop PVC profiles are extruded from virgin non-recycled elastomeric polyvinyl chloride rubber. The profiles are designed for both internal fixation and external fixation. Place the inner sections brass eyelets on the sections' ineffective sides to tying to steel reinforcement for efficient fixation during concrete pours. Heavy-duty profiles are used where large sections or where substantial heights exceed 4 meters.

Advantages

- Unique profile design with multiple ribs.
- Does not affect the quality of potable water.
- Brass eyelets at 30cm spacing for more rigidity while concreting.
- Hollow center bulb for expansion joints to accommodate movement.
- Factory prefabricated junction pieces. Easy to join on-site.
- Resistant to a wide range of diluted chemicals, including hydrocarbons.
- Heavy-duty sections with high inertia resisting bending during concrete pours.

Standards Compliance

- CRD-C572-74 Corps Of Engineers Specifications for Polyvinyl Chloride Waterstop
- BS 2782

Design Criteria

Vetostop PVC water stops choice follows the guidelines of BS 8102 and CIRIA report No. 139.

Technical Data

Vetostop PVC Range	Typical Values @ 25°C
Color	Blue
Specific Gravity - ASTM D792	1.4
Tensile Strength - ASTM D638 (MPa)	≥14
Ultimate Elongation after accelerated extraction - ASTM D638 (%)	≥ 300
Low Temperature brittleness @ -37.2 °C - ASTM D746	No crackking nor chipping (No sign of failure)
Tear Resistance (ASTM D624) (N/mm)	75
Tensile Strength after accelerated extraction - ASTM D638 (MPa)	> 11
Effect of Alkalies, change in weight @ 7 days (CRD C572-74) (%)	-0.1 - 0.25
Shore A Hardness - ASTM D2240	> 80
Effect of Alkalies, change in Shore Hardness @ 7 days (CRD C572-74) (%)	±5

	Use	Type	Thickness (mm)	Width (mm)	Roll Length (m)	Profile
For Construction Joints	Center fixation	CC250	6	250	12	
	External Fixation	RC250	6	250	12	
	Heavy duty for Center Fixation	HC250	10	250	10	
For Expansion Joints (center Bulb)	Center Fixation	CE250	6	250	12	
	External Fixation	RE250	6	250	12	
	Heavy duty for Center Fixation	HE250	10	250	10	

Center Fixation:

- Vetostop CE250: 250 mm wide centrally fixed with bulb for expansion joint.
- Vetostop CC250: 250 mm wide centrally fixed profile for construction and contraction joints.
- Vetostop RE250: 250 mm wide rear fixation for expansion joints.
- Vetostop RC250: 250 mm wide rear fixation for construction and contraction joints.
- Vetostop HC250: 250 mm wide centrally fixed heavy duty profile for construction and contraction joints.
- Vetostop HE250: 250 mm wide centrally fixed heavy duty profile for expansion joints.

Usage Instructions

Steel wires should tie Vetostop PVC center fix profiles inside form-work to the reinforcement through the edge flanges' eyelets. Rear fixation profiles should be fixed before concreting with nails to the concrete blinding and vertical shutters through the edge flanges.

Site Welding

The key to a leak-free water-stop network is correct on-site jointing. Vetostop PVC range is made of thermoplastic PVC and can be easily welded using suitable heating processes, such as welding knives. Cut the edges to be welded in a sharp and straight line, then secure the ends in a welding jig. Use the welding knife between the ends until an even, molten bead appears.

Legal Disclaimer

Saveto endeavors to ensure that any advice, recommendations, information it may give is accurate and correct. It cannot accept any liability either directly or indirectly arising from the use of its products because it has no direct or continuous control over where or how its products are applied, whether or not following any advice, specification, recommendation, or information given by us. Saveto has the right to change any of the technical datasheets specifications upon its discretion without prior notification.

Hard copies of TDSs are printed once or twice a year. Our technical data sheets are continuously updated as per R&D improvements and new 3rd party testing; kindly refer to our website for the latest updated TDSs.

Remove the welding knife and press the ends firmly together. Consult Saveto technical departments for further details.

Junction Pieces

Full range of factory made junction pieces are available for all profiles, for the following:

- Flat and vertical cross.
- Flat and vertical T.
- Corner pieces.
- Flat L.

Other custom pieces can be made upon order to customer specifications.

Shelf Life & Storage

Vetostop PVC range has an unlimited shelf life provided it is stored clear of ground in a dry and shaded place below 35°C.

Health & Safety

Hot welding of PVC will generate acidic hydrogen chloride fumes; jointing should occur in a well-ventilated area or while wearing an oxygen mask. Avoid breathing fumes. Wear a proper mask.

Additional Information

Saveto manufactures a wide range of construction chemicals and specialty products for various applications.

For further information on these products and systems kindly check our website or contact your local Saveto representative.